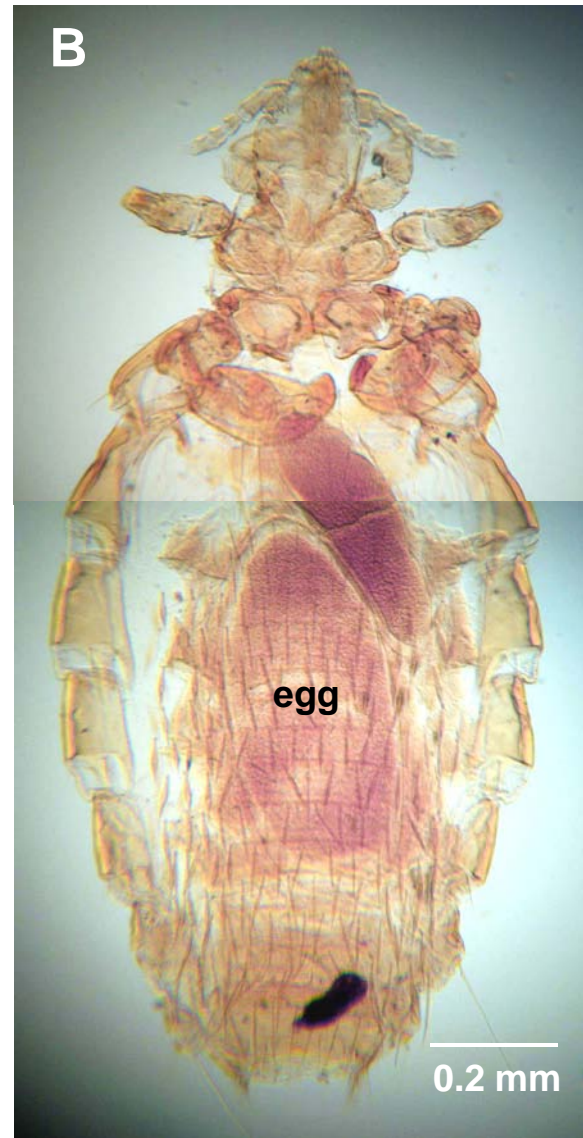
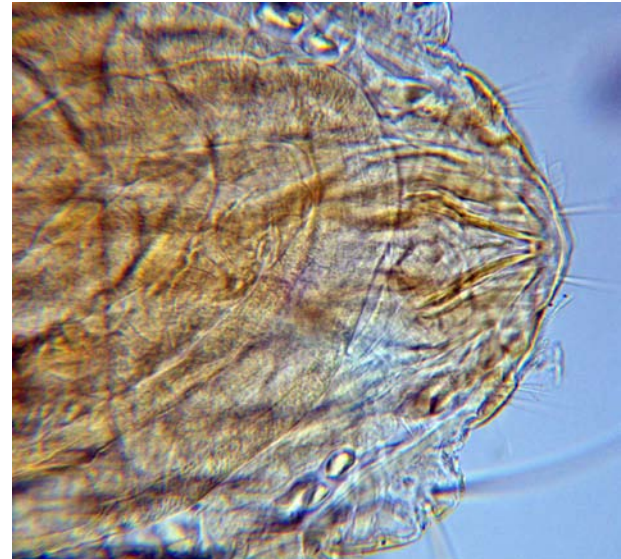


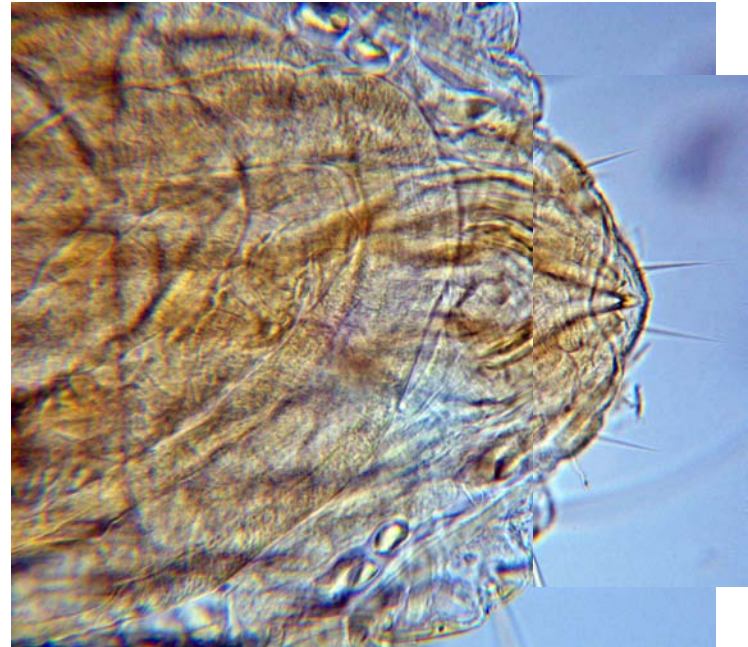
Hoplopleura sciuricola: male (A); female (B).



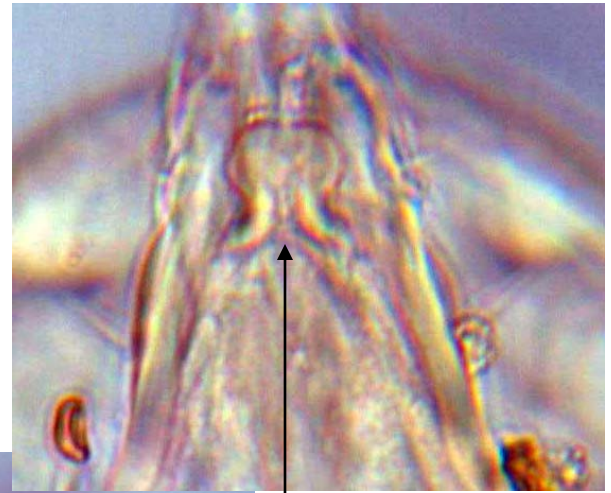
Hoplopleura sciuricola: male, copulatory apparatus
(different depths of fields).



Hoplopleura sciuricola: male, copulatory apparatus
(different depths of fields).



Hoplopleura sciuricola: male, mouth parts (different depths of fields).
Note minute serrations (arrows).



plate,
enlarged
(above)

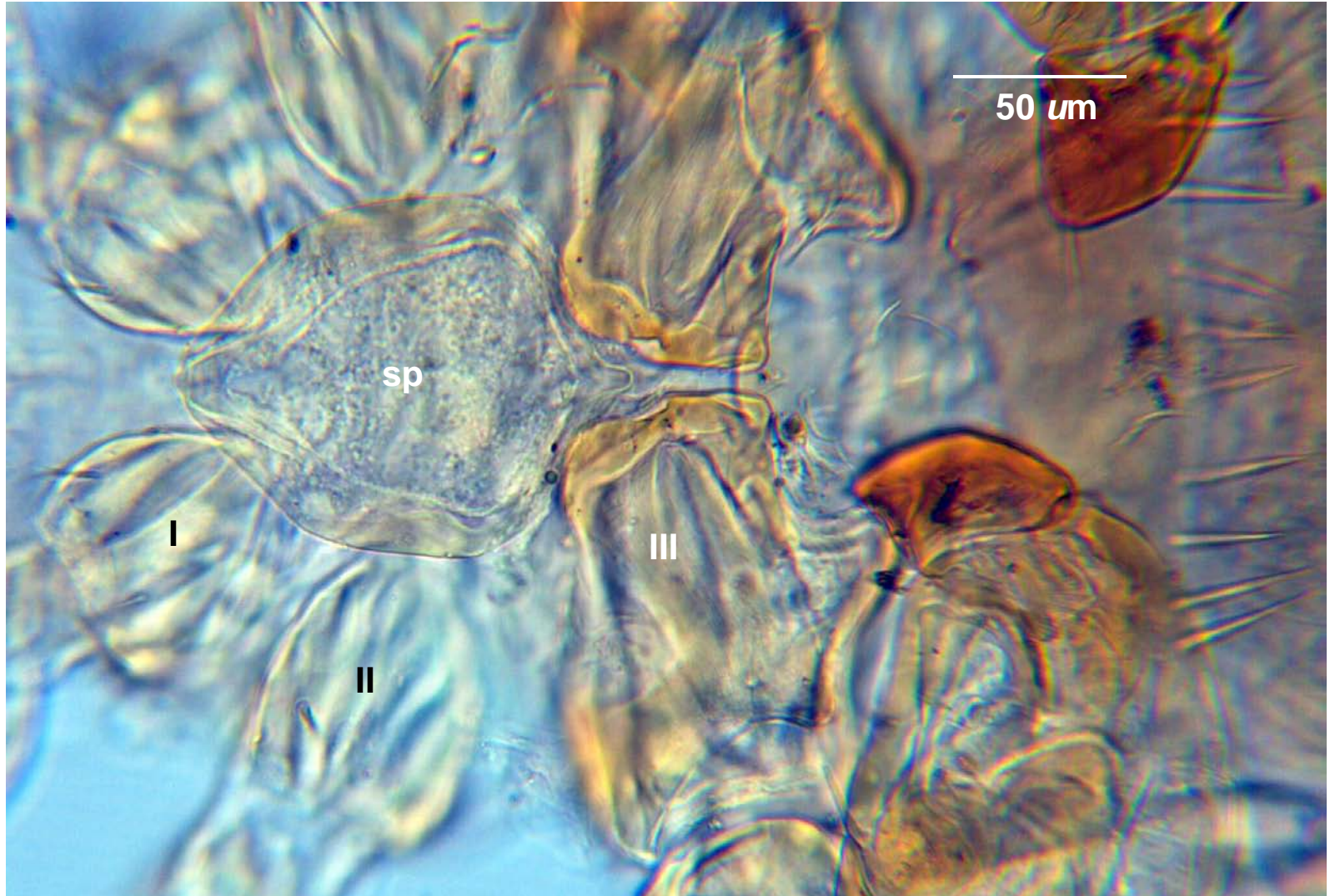
Hoplopleura sciuricola: mouth parts of two different females.
Note retracted oral stylet (s).



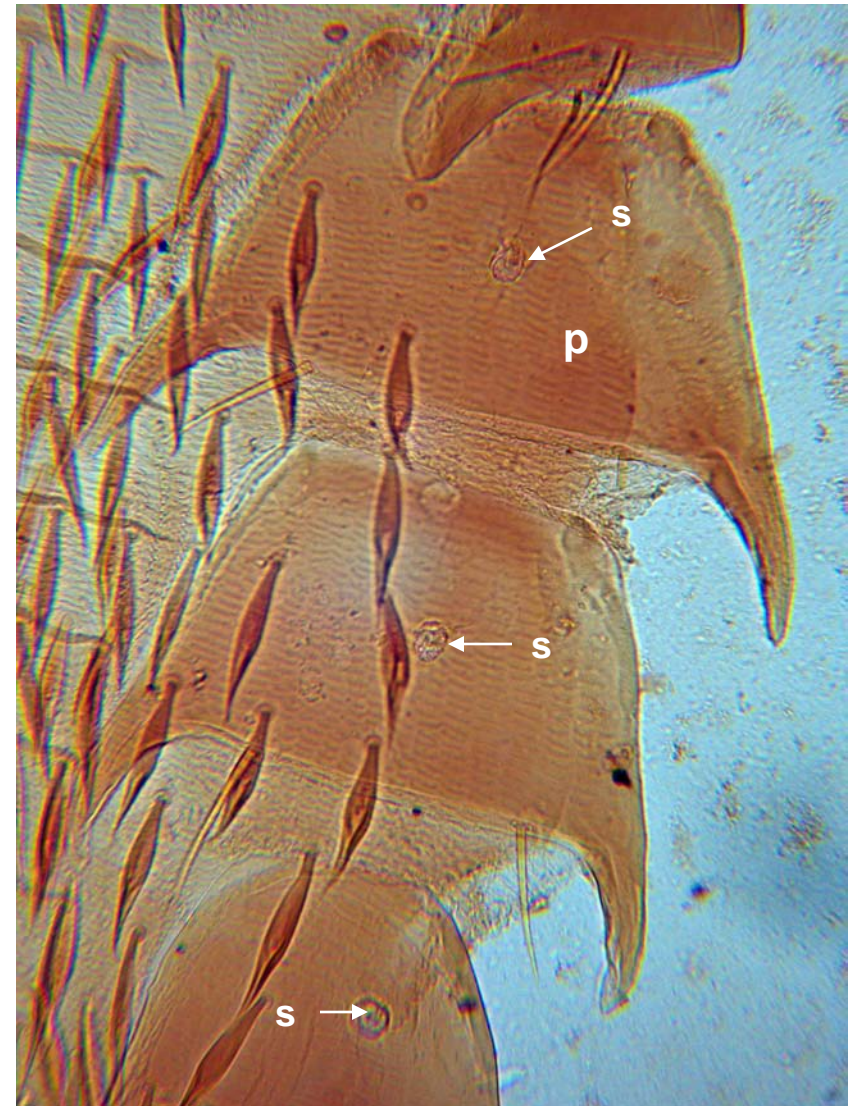
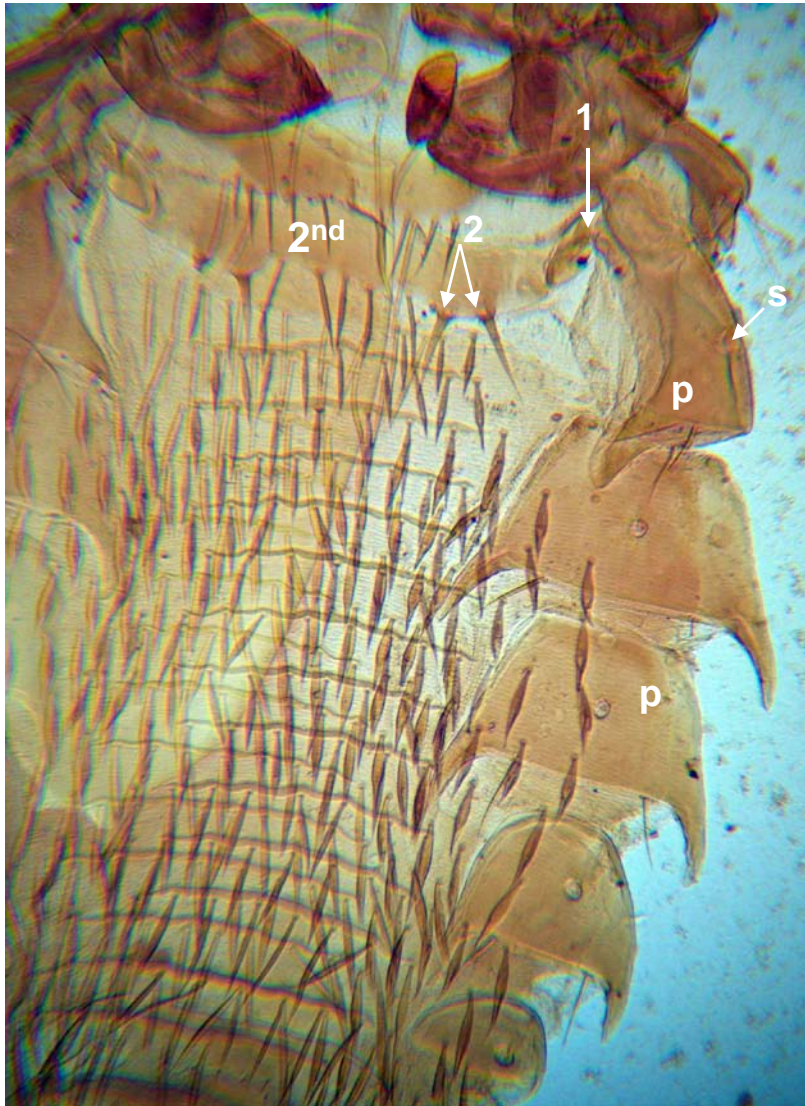
Hoplopleura sciuricola: male; antenna, and claw of first leg.



Hoplopleura sciuricola: male, sternal plate (sp). Coxae I, II and III.



Hoplopleura sciuricola: female, paratergal plates (p). Note that 2nd abdominal sternite (2nd) has lateral extension that articulates with paratergal plate (arrow 1), and 2 lateral setae more robust than other sternite setae (arrow 2). Spiracle, s (opening into tracheal system)





Hoplopleura sciuricola:
female, posterior
(g, gonopod).

